

ADELE

IN MUNICH

BEHIND THE SCENES

HEAR FROM THE THE NEG EARTH TEAM



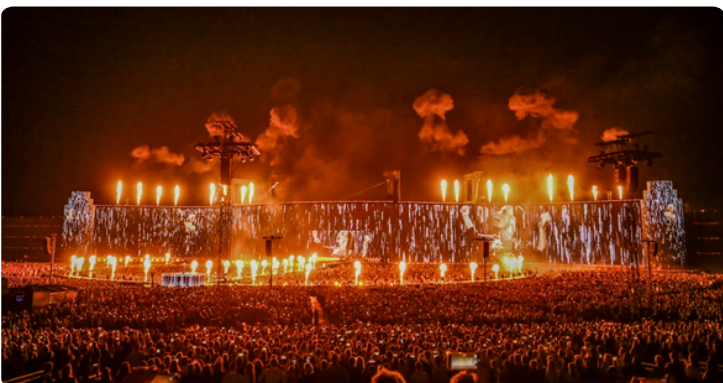
Credit: Stufish

Transforming a Vision into Reality: The Network Installation at a Massive Outdoor Event:

Joao Magalhaes - Technical solutions manager

Taking on a project of this magnitude was no small feat, involving intricate planning and cutting-edge technology to light up the expansive performance area. **The installation** featured 2,217 lighting fixtures and 12,621 pixels on 6mm tape, all controlled by a sophisticated lighting system.

At the heart of this setup were three Grand MA3 Full-Size consoles in mode 3, two Grand MA3 Lights, 14 MA3 Processing Units (PU) Large, and 13 MA3 PU Mediums, ensuring seamless control over the complex lighting design.



Credit: Stufish

Prioritizing Network Infrastructure: Redundancy, Resilience, and Reliability:

The scale of this project presented significant **network infrastructure** challenges. Our top priorities were redundancy, weather resilience, and ensuring extreme reliability. Partnering with Luminex, known for their robust and reliable equipment, was essential.

Luminex provided the network switches and DMX nodes, crucial components that formed the backbone of our system. With a 10Gbps backbone network utilizing 3km of fiber optic cable, we ensured a fully redundant link across all systems, deploying 42 Luminex GigaCore switches.

The Araneo monitoring system, paired with the MA3 Plugin, was invaluable, allowing us to monitor for anomalies throughout production, prevent failures, and maintain confidence during showtime.

Overcoming the Challenge of a Large-Scale Follow-Spot System:

One of the standout challenges was implementing an effective **follow-spot system** over the vast 14,400m² area, with a 120m x 120m performance zone. The spot towers, positioned 128 meters from the stage, required precision and accuracy. 22 Forte ltx were part of the client spec units tracked with the ZAC T PRO system, which provided smooth movements and excellent colour quality, crucial for such a large-scale event.

Navigating the Elements and Audience Demands:

Operating in an outdoor environment with 80,000 attendees, we faced unpredictable weather, including heavy rain, as well as the use of fire effects and confetti. The ZAC T system, comprising two pro-servers, 25 pro anchors, and 12 trackers, excelled in these conditions. It demonstrated its capability to handle the unique demands of large-scale outdoor productions. The ZAC Track team played a crucial role in supporting us, delivering a fully automated follow-spot system that was both reliable and efficient.



Credit: Alexandra Waespi

Delivering Success Through Teamwork and IP65-Rated Equipment:

Reliability in our lighting system was paramount, which made **IP65-rated** fixtures essential. The Neg Earth Portfolio provided these fixtures on a large scale, ensuring our lighting system could withstand the outdoor elements without compromising performance. However, the true backbone of this project was our dedicated team. From Neg staff to freelancers, everyone involved was committed from the outset to delivering a successful, world-record-breaking event. This project not only showcased our technical capabilities but also underscored the importance of teamwork and collaboration in achieving excellence.

Rick Williamson - Motors & Rigging Manager

412 motors (500kg, 1000kg and 2000kg) were serviced, tested, and sent onto this gig. It supersedes the **biggest gig** we with ever done by nearly double, in terms of motors and rigging counts.

We knew this was going to be the biggest pop show on the planet. So, we prepared for this well in advance, I was having conversations with head rigger **Colin Raby** months prior to this, to make sure we had everything covered for him and his team.

The system itself for us wasn't complicated, as it was all fixed speed motors and control. However, the sheer scale of it was the thing that will always stick in our minds. The Neg Earth Motors + Rigging teams took care of it!



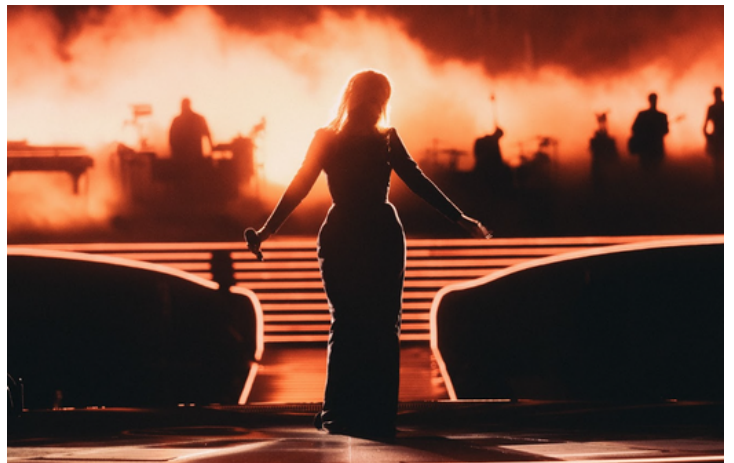
Credit: Alexandra Waespi

Steve Hornsey – Warehouse Manager

With **22 trucks** of lighting and rigging equipment supplied by Neg Earth, the preparation required for this project was immense.

Given the cables alone equated **52,000** metres of cables in length and with 570 individual truss sections totalling 1465 metres of truss it was certainly one of the largest projects we've been involved with.

The truck loading was spread over several days, and with equipment needing to be distributed to various areas of the venue, there was no margin for error. However, with the **unwavering dedication** and hard work of the entire team, we were able to successfully deliver everything on time.



Credit: Alexandra Waespi



Thank you!

Neg Earth Lights want to express our sincere thanks to each and everyone who worked tirelessly behind the scenes. The hard work, dedication, and collaboration have been truly inspiring.

Paul English - Production Manager.

Cory Fitzgerald - Lighting Designer.

Davey Martinez - Lighting Programmer.

Nick Van Nostrand - Lighting Director.

JJ Contini - Systems Technician.

Joao Magalhaes - Systems Technician.

With a huge thank you to the entire crew headed up by Crew Chief, **Keith Johnson**.

"I am incredibly proud that **Neg Earth Lights** is providing lighting and rigging for Adele's show in Munich – what an epic event! The show design is the creation of a world class team, and we've had the pleasure of delivering **Cory FitzGerald's** lighting vision in the safe hands of Production Manager **Paul English**. It has been great to collaborate with all the suppliers involved and we're delighted to support Adele."

Dave Ridgway



ADELE

**MUNICH 2024
KIT LIST**

2217 LIGHTING FIXTURES

412 MOTORS

1465 METRES OF TRUSS

52,000 METRES OF CABLES

